

Lehigh University



Sigma Phi Epsilon Articles

in

Epitome, 1958-1976

*Compiled by
Gordon Everstine '64
March 2014*

This book was typeset with $\text{\LaTeX} 2_{\epsilon}$ (MiKTeX).



1958

EPITOME



First Row: Tiernan, Clauson, Johnson, Williams, Plumhoff. Second Row: Reed, Treasurer; Gilmore, Ulak, Heske, Rand, Harris, Keller, Bredimus, Lewis, President. Third Row: Warner, Harrison, McHugh, Nice, Harding, Secretary. Fourth Row: Mason, Keenan, Davis. Fifth Row: Young, Henry, Widmayer. Sixth Row: Wetlaufer, Rawls, Burrell, Boettger, Vice-President; Champin, Campion, King, Donaldson, Doll, Kent.

When the Balfour man stops by and sets out his wares, that's the signal for every brother to either run or get out his wallet, since the display always seems to have something for everyone.

Σ Φ Ε

A social season, which has seen few quiet Saturday nights, has been one of the prime features of Sigma Phi Epsilon this year.

The highlight of the social season was the Lafayette weekend alumni party. The twenty-six to thirteen victory, plus the 228 people who were packed into the house, produced a party which will not be forgotten for a long time. The Christmas City Six was on hand to set the mood, and everyone from the Class of 1903 on up considered it a big success.

All play and no work is a combination which will not be found at this house. The Sig Eps have won numerous awards offered by the national fraternity for outstanding chapter achievement.





Sigma Phi Epsilon

Pennsylvania Epsilon Chapter





1959 EPITOME

RICHARD K. BERNARD
Editor-in-Chief

EUGENE MERCY
Business Manager

Sigma Phi Epsilon

Pennsylvania Epsilon Chapter



Sigma Phi Epsilon anxiously looks forward to the erection of a magnificent new home in Sayre Park in the very near future. The University has approved the plans for the house; the building fund is near its goal; and all that now remains is the ground-breaking ceremony.

Sigma Phi Epsilon probably celebrates Lafayette Weekend more enthusiastically than any other Lehigh fraternity. The Sig Eps made a big blast of this year's party, packing hundreds of alumni into the jumping house. The weekend was a tremendous success socially and financially, as the alumni helped push the building fund toward completion.

The annual Sweetheart dance was another highlight of the social season. The traditional dance was held on Valentines Day, and as usual a beautiful queen was chosen to add to the long list of lovely Sig Ep Sweethearts.

A great emphasis was placed on scholastics in recent years at Sigma Phi Epsilon, and a greatly improved house average is proof of a job well done.

Σ Φ Ε

*Out with the old, in with the new at SPE.
There's nothing like a new television to im-
prove the atmosphere.*



First row: Davis, Reed, Clausen, Champin, Harding, Secretary; Schneider, Steitz, Halverson, Lindsay, Campion, Ulak. Second row: Burrell, Boettger, Vice-President; Kent, McHugh, Rawls, President; Henry, Comptroller; Correll, Warner, Rand, Harrison, Heske, Young, Harris, Jorgenson. Third row: Wetlaufer, Manning, Plumhoff, Keller, Williams, Tiernan, Heldig, Riley, Vogel, Supplee, Johnson, Donaldson, Schadler.



Apitome

1960



SIGMA PHI EPSILON: *First row:* Huntington, B. Tiernan, Malore, Steitz, Tait, Poole, Williams. *Second row:* Harding, Keller, Wetlaufer, Manning, Hapke, Henry, Ulak, Rauls, Schadler. *Third row:* Burrell, J. Tiernan, Young, Campion, Vogel, Johnson, Correll, Heske. *Fourth row:* Donaldson, Kent, Plumhoff, Champin, Warner. *Fifth row:* Clausen, Harrison, Rand, Helbig, Lindsay.

PRESIDENT *Reuben R. Rawls, Jr.*
 VICE-PRESIDENT *Richard F. Ulak*
 SECRETARY *David T. Hapke*
 TREASURER *Bruce C. Henry*

Σ Φ Ε

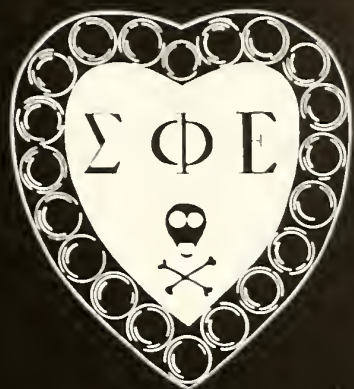
"His Master's Voice" as musical brothers bang out a rousing version of "My Dog Has Fleas".



strong building program nets a new house in Sayre Park

With the return of Fall Houseparty, the brothers of Sigma Phi Epsilon succumbed to the influences of popular television with their "Boot Hill Blast". Several dateless Saturday nights provided "down time" for authentic details to be interpolated into the eastern character of non-violent Lehigh men. The combination of costume and a mildly alcoholic malt beverage sufficed to create a western atmosphere in the minds of the befogged wranglers and their equally westernized belles.

In more traditional dress, the SPE's once again sponsored the Sweetheart Dance at the Hotel



Bethlehem. A relaxed evening of dining and dancing culminated in the selection of the Sig Ep sweetheart, who was, as usual, the embodiment of coeducational charms.

Putting aside the social whirl, the brothers approached the wind-up on a hard fought drive for building funds. Always a town fraternity, SPE now proudly staked a claim on the hill and prepared to join the Delts and Phi Sigs in the Sayre Park stampede which, in recent years, has been gaining great momentum. Backed by enthusiastic alumni, the Sig Eps will soon be using the bait of a house on the mountain to lure campus happy freshmen in the rushing contests.



Sigma Phi Epsilon *Pennsylvania Epsilon Chapter*

1961

T
Enitome



SIGMA PHI EPSILON: *First row:* Rehfeldt, Cobb, O'Brien, Tait, *Secretary:* Correll, *President:* Schadler, *Controller:* Manning, *Historian:* Banks, Goulet, Craven. *Second row:* Huntington, Hapke, Simmons, Depew, Steitz, Helbig, Hoefler, Osborne. *Third row:* Singmaster, Wright, Mullin, Hoffman, Baum, White, Williams, Barry, Elliott, Bordes, Tiernan, Young, Dunham, Viczorek, Gili, Rushforth.

Sigma Phi Epsilon

OFFICERS: *First row:* Vogel, *Vice-President:* Correll, *President:* Manning, *Historian:*. *Second row:* Tait, *Secretary:* Schadler, *Comptroller:*.



Following the fraternal trend of seeking residence in Sayre Park, Sigma Phi Epsilon has tentatively set its official ground-breaking ceremony for April, 1961. The architectural design of the proposed new home will differ somewhat from most fraternity residences. The modern-styled structure will provide for four-man suites, instead of the usual dormitory-sleeping arrangement in which sleeping quarters are situated in one or two large rooms.

For most fraternities, the highlights of their social seasons are the Fall and Spring Houseparties. At Sig Ep, Houseparties are weekends of gay festivities; however, the annual Sweetheart Dance is the most spectacular social event. Traditionally, the dance is held in the early part of February, as close to Valentines' Day as possible. This year, the house was decorated in its entirety, the most prominent display being a huge flower-like heart. As is customary at the Sweetheart Dance, a queen was selected who exemplified the college man's ideal of feminine pulchritude.



SIGMA PHI EPSILON
ΣΦΕ

1962

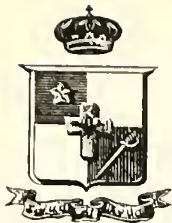
epitome

DEAN ROBERT B. STOUT



SIGMA PHI EPSILON: First Row: Vernay, Cobb, Capron, Gross, Rehfeldt, Banks, Rushforth, Somodi. Second Row: Williams, Huntington, Comptroller; Osborn, Vice President; Hoefler, President; Tait, Secretary; Dunham, Recorder. Third Row: Begg, Jackson, George C. Horak, Faculty Adviser; O'Brien, Houtz, Simmons, Depew, Elliott, Craven, Hoffman, Lankford, White, Goulet Everstine. Fourth Row: Lampert, Domchek, Antich, Singmaster, Walker, Donaldson, Barry, Tiernan, Helbig, Bordes, Musch, Carpenter.





Pennsylvania Epsilon Chapter

Although the physical plant of Sigma Phi Epsilon will change in the near future, the men of this fraternity will ever retain the ties and traditions which mark them as brothers of Sigma Phi Epsilon and as members of the Lehigh community.

Scholastic recovery has not stopped the Sig Eps from actively participating in campus life. Sigma Phi Epsilon is represented in the honorary societies of Tau Beta Pi, Pi Mu Epsilon, Phi Eta Sigma, and Delta Omicron Theta. There is a good distribution of Sig Eps in the professional societies and there are brothers in the sophomore and junior class cabinets, as well as the rest of the spectrum of campus organizations.

Athletic interests at Sigma Phi Epsilon are focused mainly upon the various clubs and upon intramural sports, although Sig Eps can be found on the varsity lacrosse, hockey, and rifle teams. In intramural competition, the Sig Ep house posted a strong standing in several areas of the all-University sports race.

Community service forms a focal point of the activities of Sigma Phi Epsilon. In addition to the annual Christmas party for underprivileged children, Sig Eps could be found during this past year collecting door to door for charity and shoveling snow from their neighbors' walks during the winter months.

Parents' Weekend, Fall Houseparty, and Lafayette Weekend kept things lively at the Sig Ep house, and the Lafayette display provided an energy outlet for all of the SPEs.

The social season at Sigma Phi Epsilon would not be complete, however, without the annual "Sweetheart Weekend." This gala event is most anxiously awaited by everyone in the "fraternity with a heart."

ΣΦΕ

SIGMA PHI EPSILON

EPITOME

1963

VOLUME 87

BRUCE C. WITTMAIER, EDITOR-IN-CHIEF

JOSEPH L. GETRAER, BUSINESS MANAGER

The long history of Sigma Phi Epsilon as an off-campus fraternity draws to a close this year. This should but doesn't signal the end of the brothers' long hikes to and from class, however.

Brothers with cars, it is true, will no longer have to battle snow-clogged city streets, just as they will never again run into class ten minutes late because a 100-car freight train blocked their route. Few will miss the daily race to beat the patrolman to the expired parking meter.

Those brothers without cars will long remember the daily noontime wait on a windy and cold corner at Broughal for a ride back to the house and the scenic walk up New Street after an afternoon lab.

Life on Market Street, however, has had its laughs. The location was strategically close to the Moravian dorms. This bothered no one. Brothers taking after-dinner walks around the block saw infinitely more feminine curves than they will see in Sayre Park.

Perhaps grades will improve in a new location. Even at their old house last Fall, with a move imminent, the brothers posted the semester's second highest average among fraternities.

No doubt, the new house will be of advantage to all, even at its far-flung site up South Mountain.



Pennsylvania Epsilon Chapter . . .



In a quiet corner of the old "Sig Ep" house, a brother takes time to make sure that there still is an outside world.

ΣΦΕ



SIGMA PHI EPSILON

First Row: Begg, Eustice, Eversteine, Goulet, Anderson, Banks. *Second Row:* Vernay, Depew, Singmaster, Barry, Cobb, Bainer, Capron, Young, Tindal. *Third Row:* Gross, Craven, Dunham, Elliot, White, Somodi, Kitson. *Fourth Row:* Houtz, Rehfeldt, Bordes, Voorhees, Viczorek, Hoffman, Walker, Domchek, Rushforth, Lankford, Hoeffler, Taite, Hogan. *Fifth Row:* Mannik, Keller, Cook, Antich, Simmons, Gellings, Schnack, Musch, Jackson, Rainer, Gili, Lampport.



EPITOME

NINETEEN SIXTY-FOUR

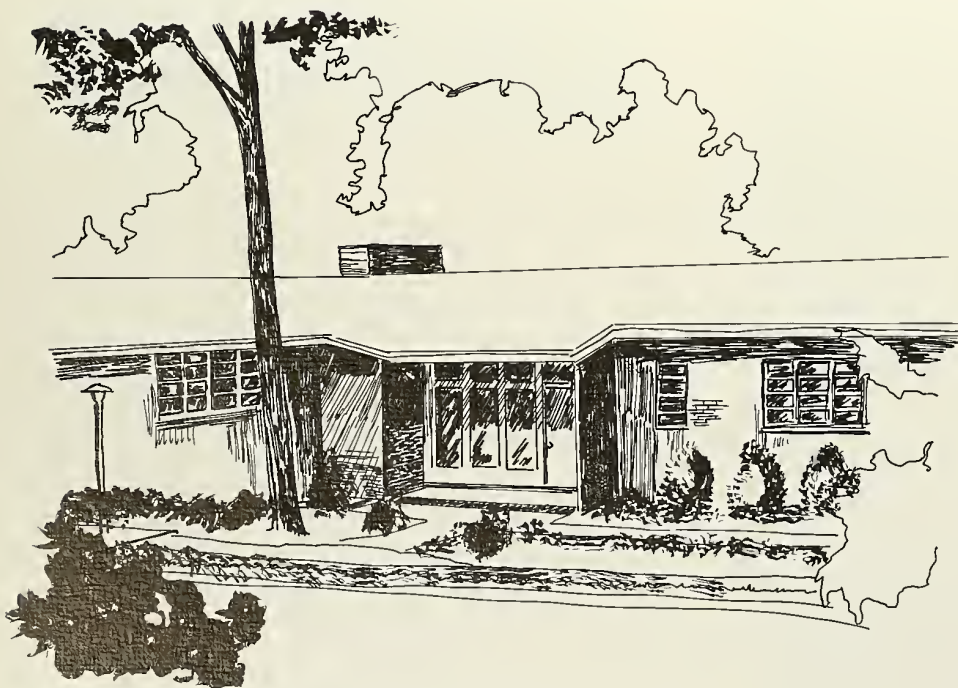
LEHIGH UNIVERSITY

BETHLEHEM, PENNSYLVANIA



SIGMA PHI EPSILON

$\Sigma\Phi\epsilon$





First Row: Lentz, Johnson, Buftan, Vialo, Anselmo, Tutschulte, Dunham, Weiksner. **Second Row:** Musch, Antich, Everstine, Lankford, Elliott, White, Lamport, Anderson, Capran, Jackson. **Third Row:** Damchek, Craven, Simmons, Keller, Schnack, Kitsan, Hautz, Mannik, Young, Vernay, Tindall, Haefler, Samodi. **Fourth Row:** Walker, Ranieri, Gellings, Cooke, Hagan, Bainer, Grass, Eustice, Rushfarth.



THE
EPITOME
SIXTY FIVE

LEHIGH
UNIVERSITY
BETHLEHEM, PA.



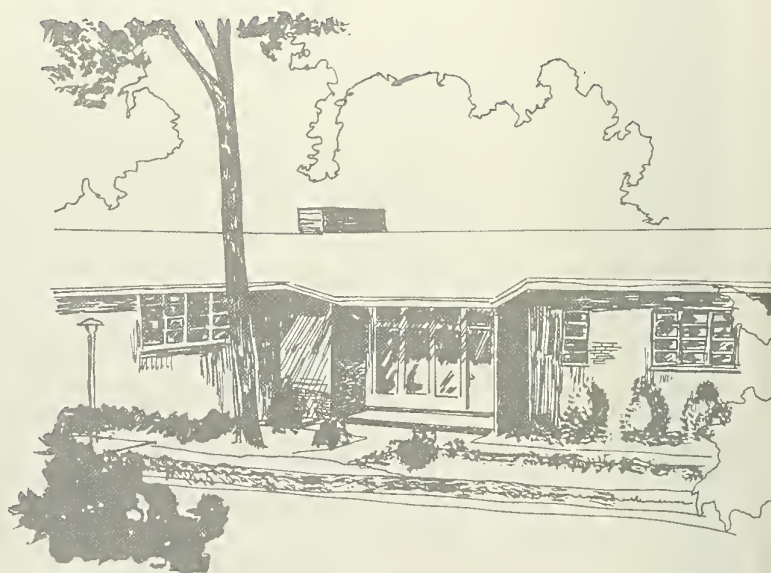
First Row: Gutzwiller, Johnson, Cameron, Hartzell, Nauhaus, Rebel, Mascot; Gross, Kil-moyer, Wood, Gili, Steele. Second Row: Dunham, Bainer, Vice-President; Keller, President; Eustice, Young, Secretary; Powers, McLean. Third Row: Landis, Cooke, Kitson, Schnack, Weiksner, Anselmo, Mannik, Tindall. Fourth Row: Mullin, Lentz, Tutschulte, Hogan, Voorhees, Johnson.

SIGMA PHI EPSILON

For the past two years, Sigma Phi Epsilon has been settling into its new Sayre Park residence, the house with the bright red door. By now the members are quite at home in the 38-man building and are finding it to their liking.

The house was opened to the alumni during the weekend of the 100th Lafayette-Lehigh football game and was the subject of general approval.

However, preoccupation with their new quarters has not prevented the Sig Eps from continuing their round of extracurricular activities. The house is represented in three class cabinets, the Interfraternity Council, Cyanide, course societies and honoraries. It also has contributed participants to the band, sailing club and track team, and its football team was runnerup in the 1964 fraternity competition.





THE
SIXTY-SIX

EPITOME

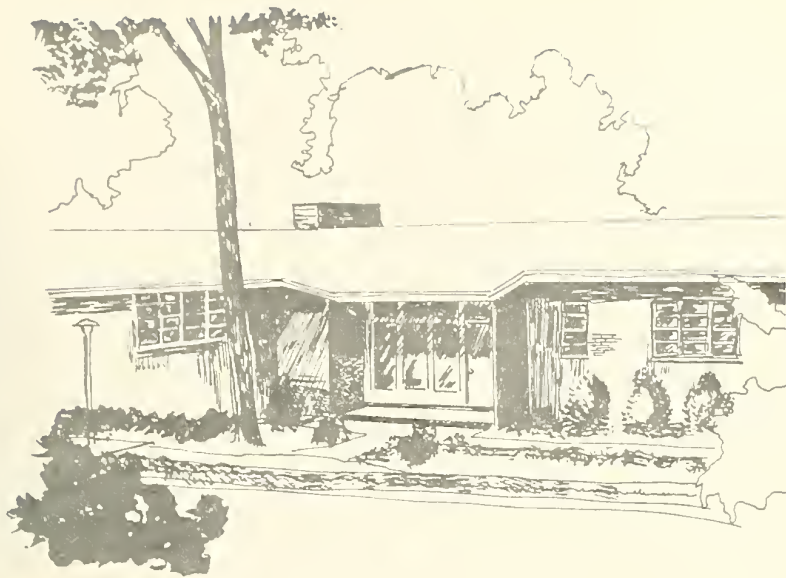
LEHIGH
UNIVERSITY
BETHLEHEM, PA.





Before the Psi Upsilon house was built at the head of Brodhead Avenue, this was the site of a tavern where the 19th century Lehigh men escaped to smoke and drink, away from the watchful eyes of University officials.

One cause of all the moving around the early houses had to go through can be blamed on an early vice president of the Bethlehem Steel Co. In the early 1920's, Theta Xi's only neighbor was this VIP. Apparently it was too much for the man, because he bought the Theta Xi house, forcing them to relocate.



SIGMA PHI EPSILON



First row: Cameron, Barr, Dunham, Wood. Second row: Swartz, Eustice, Bufton, Mannik, Hartzell, Powers, Steele. Third row: Haight, Gross. Fourth row: Heal, Locke, Weiksner, Kercher, Gili, Yahres, Kurian, Gutzwiller, Anselmo. Fifth row: R. Johnson, W. Johnson, Ulle, Nies, Voorhees, McLean.



1967
EPITOME



ROSS T. SCHULTE RANDY JOHNSON ROBERT J. LENTZ THOMAS J. BOWA WILSON MANNIK THOMAS F. EUSTICE JOHN S. LANDS JR. EPH. GELLING JACK L. BUFTON WESLEY W. KESNER JAY BAINER



JOSEPH W. POWERS PETE ANSELMO



ED. C. KERCHER



NED B. LOCKE



JIM C. GUTZWILLER



GENE HARTZELL



DAVID GIL



JOHN A. VOORHEES



RANDALL G. WOOD



JERRY F. STEELE BERT CAMERON WILLIAM W. GROSS SAM NAUHAUS

Sigma Phi Epsilon

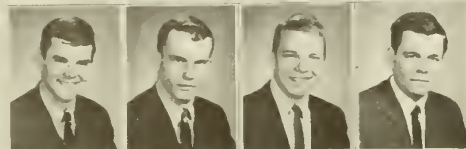
19 66



Lehigh University



WALLY JOHNSON JAMES W. POLLOCK WILLIAM W. McLEAN STEVE NIES



JOHN B. YAHRES WARREN T. ULLE JOE S. HEAL THOMAS L. BARR



JAMES F. KURIAN RUDOLPH SWARTZ HARLES S. HAIGHT ROBERT D. GRESCH



JOHN O. McLEAN WILLIAM P. MCCOACH THOMAS C. CARLTON DONALD A. COOK



REBEL



GERALD P. SJOBLUM JAMES S. WALLACE RICHARD J. WILMES JOHN M. KOEGLER JR.



HAROLD G. McVILLIE JOHN J. ZECKOSKI JAMES L. CORRIS III STEPHEN J. BARTLELL ZAN HERR ROBERT R. SHATTUCK MARTIN WACK HAL W. LUND HOLINGER BR. WINTER JACK D. MEYER

SIGMA PHI EPSILON





The University of Richmond was the site of the founding of Sigma Phi Epsilon. In 1901 six men started the "Saturday Night Club." This group became known as the "Sacred Hearts Club" because of their heart shaped badge. On November 1, 1901, they adopted the name Sigma Phi Epsilon.

The Sigma Phi Epsilon plan of finance, which was developed at Purdue during World War I, has been copied by most other fraternities. This plan is controlled by alumni and is the most reliable one used.

Omega Pi Alpha, a sixteen member local at Lehigh, petitioned for admission in 1906. In 1907 it was admitted to Sigma Phi Epsilon as the Pennsylvania Epsilon chapter. Their first house was located on West Fourth Street. In 1962 they moved to their present location in Sayre Park.

Ralph L. Wilson, the Vice President of Timkin Roller Bearing Co. and also a member of the Board of Trustees of Lehigh, was a member of the Pennsylvania Epsilon chapter. Outstanding national alumni include Senator Harry F. Byrd and Ted Mack (television).



epitOME 1968

Lehigh UNIVERSITY
BETHLEHEM, PENNSYLVANIA

Lawrence R. Carapellotti
Editor

Martin Neidell
Business Manager

Sports 188

Living Groups 230

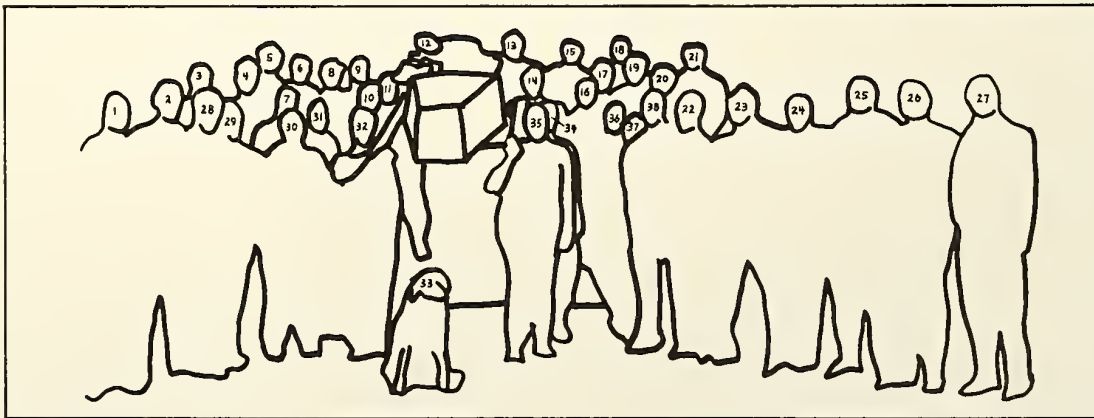
Greeks 266





SIGMA PHI EPSILON

Everyone has to go to that big warm houseparty down below some day and Sig Ep has decided to give a true Lehigh send-off to one of its members who died in action. Some people prefer to die with their boots on, but consumption of two quarts of fine liquor and a half keg of beer makes for a happier exit. Although the cause of death was never specified, if that keg and those bottles were emptied by the victim in one night it is rather obvious what happened.



1. Sam Nauhaus
2. Hal Melville
3. Jim Dorris
4. Bob Shattuck
5. Hank Dorkin
6. Jim Hall
7. Sky McCammon
8. Jerry Sjoblom
9. George Jacobs
10. Chuck Half

11. Chuck Haight
12. Don Hollinger
13. Ken Helgeson
14. Jim Kurian
15. Klaus Burckhardt
16. Bruce Shaw
17. Bob Meger
18. John Koegler
19. Tom Barr
20. Jim Wallace

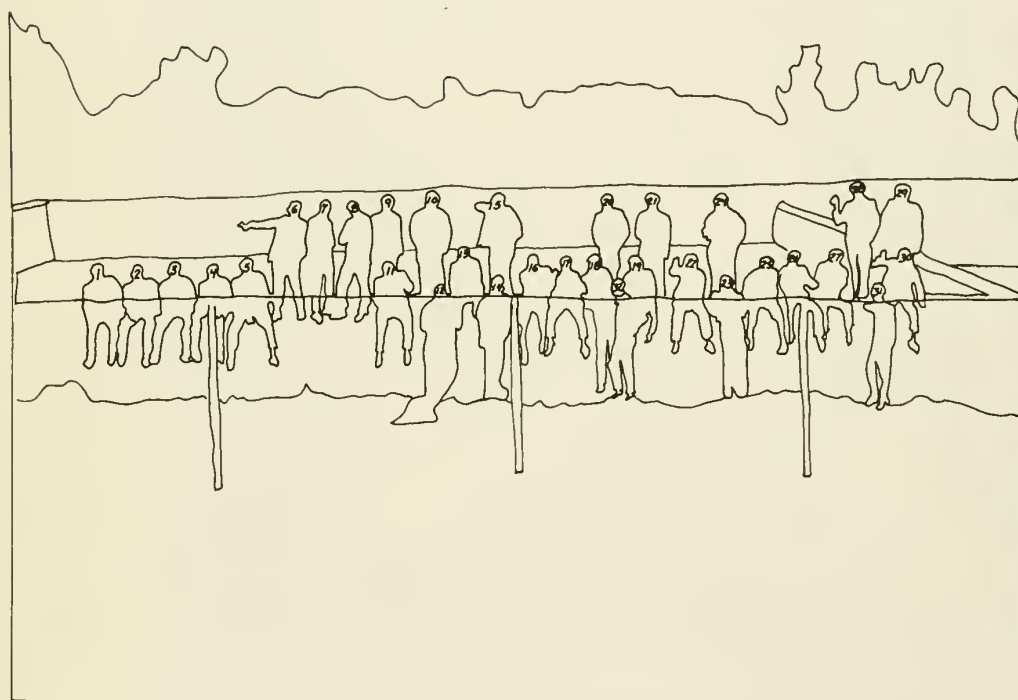
21. Frank Kerrigon
22. Marty Mack
23. Bruce Fichter
24. Bob Breisch
25. John Yahres
26. Bill McCoach
27. Ned Locke
28. Don Cook
29. Ted Ulle

30. Jack Wielar
31. John McLean
32. Steve Bartell
33. Rebel
34. Dale Holmes
35. Jim Pollock
36. Bob Varga
37. Don Geiling
38. John Zeckoski



ALBERT C. ZETZLEMOYER

Sigma Phi Epsilon



1. Jim Dorris, *President*
2. Al Brewen
3. Art Lyons
4. Jack Wielar
5. Ken Helgeson
6. Bob Shattuck
7. Hank Dorkin
8. Frank Kerrigon
9. Bob Meger
10. John Koegler
11. Bruce Fichter
12. Jim Wallace
13. Lauren Johnson
14. John McLean
15. Jerry Sjöblom

16. Don Hollinger
17. Carl Detterline
18. Don Cook
19. Laurie Burke
20. Bob Breisch
21. Steve Bartell
22. Don Geiling
23. George Jacobs
24. Pete Graham
25. Bob Weiss
26. Keith Scott Morton
27. Larry Zanetti
28. Klaus Burekhardt
29. Chuck Half
30. Dale Holmes

31. Bill McCoach
32. Marty Mack

NOT PHOTOGRAPHED:

Art Abriss
 Jim Hall
 Zan Herr
 Ned Locke
 Hal Melville
 Al Rudolph
 Bruce Shaw
 Bud Swartz
 Ted Ulle
 Bob Varga
 John Zeckoski





EPITOME *1970*

Lehigh University
Bethlehem, Pennsylvania

Kenneth P. Fischl
Peter K. Zanger
Co-editors

Roger L. Sonstroem
Business Manager



*Sigma
Phi
Epsilon*

1. S. Corsa
2. P. Coppock
3. G. Bitner
4. M. Lasonde
5. W. Hall
6. B. Mulder
7. A. Abriss

8. P. Graham
9. F. Kerrigon
10. R. Varga
11. R. Meger
12. C. Kubic
13. A. Hill

14. L. Gilbert
15. J. Kraus
16. B. Webb
17. D. Geiling
18. H. Mullen
19. T. Miller





1971

EPITOME

LEHIGH UNIVERSITY

BETHLEHEM, PENNSYLVANIA

BUSINESS MANAGER

SKIP JENNINGS

EDITOR

KEN FISCH



SIGMA PHI EPSILON

First row: Bill Barter, Rick Arons, Bill Clark, Craig Schmall, Rudi Neher, Pete Graham, Pete Hooper, Chuck Kubic, Carl Detterline, Paul Coppock, Larry Gilbert, Jason, Wes Winterbottom, Alex Hill, Tom Andruskevich, Tom "Rex" Miller. Second row: Rick Holtgrieve, John Mahony, Jim Corsa, Bob Gerry, John Spannaus, Jim Moose, Andy Mills, John Gantz horn, Steve Szabla, Mike Lasonde, Mark Evans, Jay McDermott, Bruce Johnson, Hank Dorkin, Mike Dowse, Doug Devitt, Klas Burckhardt.



. . . Yooooooo! . . . \$60 phone bills . . . I.E. Department tales
 games . . . and the "Phantom Pound" . . . Magic City, the
 incredible all-night pinball crew . . . Sore! . . . 34-0 . . . John
 Fred's big bright green '59 Ford "Supercar" . . . the psychological
 bummer and his vodka sours on 'Rents Weekend . . . the T-Bird
 crew . . . Big Al and his "greaser" Z-28 . . . meaningful rela-
 tionships, Thursday night dates . . . 8 pinned brothers and guys
 going "down the tube" . . . mark? . . . the incredible "Sir
 Dowse" show in the upper hall or "It Came From Beneath the Bar"
 . . . he's no fun, he fell right over . . . W.F.S. . . . a 650
 Triumph . . . "Bear, you really turn me on; well you don't have to
 be so smug about it!" . . . Jay Peak and the ski freaks—Oats learns
 the finer points about trail skiing . . . 2 for a nickel? . . .
 Wednesday night parties and bar crews . . . \$20 trou . . . "I
 sometimes forget my keys but I always remember my foot" . . .
 Sepeque . . . hockey games from 11-2 at night . . . sucked me
 into it . . . The Great U-trou Robbery and how the pledges learned to
 hitch . . . Hard Woody on a BMW . . . "you're bumming me" . . . Jason
 still doesn't know "Bingo" . . . Young Will trades his VW for an "Alfa"
 . . . Airhead decides to become an aviator . . . he's high on the real
 thing . . .

1972 EPITOME

Sigma Phi Epsilon



T. Andruskevich
R. Arons
W. Clarke, III
P. Coppock
S. Corso
T. Davies
D. DeVitt
W. Dove
D. Dowse
R. Ehrenfeld
M. Evans

M. Finch
J. Gantzhorn
R. Gerry
L. Gilbert
W. Golab
A. Hill
R. Holtgrieve
P. Hopper
T. Hutchinson
R. Johnson
W. Johnson

M. Kendig
C. Kubic
M. Lasonde
W. McCarthy
J. McDermott
E. Miller
T. Miller
A. Mills
J. Moose
B. Mulder
J. Pearce

M. Pekarski
R. Pim
J. Powell
G. Rippel
C. Schmoll
J. Spannaus
S. Springer
S. Szabla
C. Waltz
W. Winterbottom
R. Woodruff

EPITOME

1973

EPITOME



R. Arons
W. Boyes
T. Davies
W. Dove
D. Dowse
M. Evans
M. Finch
R. Gerry
T. Giarla
R. Hammell

R. Holtgrieve
P. Hopper
T. Hutchinson
R. Johnson
W. Johnson
M. Kendig
C. Kerr
S. Kuhls
J. MacWilliams
J. Mahoney

W. McCarthy
R. McKinney
E. Miller
M. Miller
W. Mongon
J. Murphy
R. Parker
M. Pekarski
J. Powell
G. Ripple

C. Schmoll
D. Smathers
J. Spannaus
S. Springer
S. Szabla
K. Unangst
S. Villas
C. Waltz
R. Woodside
R. Zuk



Sigma Phi Epsilon

I'll crush ya, coming in on a prayer, You're Kathy aren't you?, Ho crew, Lehigh Penis, Ya-ba-da-ba-dooo you mother!, farout, Are you psyched?!, Kathy Rigby, JoAnne, Barbra, Rosie, Linda, Down the tube, I think I'm in love . . . let's----!, ADB, Cowboy, Hawk, Hoagie, Kront, Dick Decent, Skunker, Frog, Furburger, I usually don't get pissed . . . BUT I'M PISSED!, Parks, Judy-Judy-Judy, Fincho, Chunky, I still need a waiter for animal hour, Corned Beef again?, Jason, Sweetheart Weekend, Allright!, bring your "bats," come here . . . I want to show you something, I really have to tool, Bennie, piss me off, Which one of you sweatogs broke the john?, Moiphy, Arby, Hutch, Pekar, Romeo, Doger, Pimpo, I'd like to thank the brothers of Phi Sigma Epsilon, My girl's from Smith . . . , Phone on 10!, I have a suggestion, Port Jervis, Thanks . . . I needed that, Guess whose birthday it is today!, Thank you, no, thank you!, he's superpsyched on the house, the Great Nemo, Dixieland Dicks, another Bandie!, Margie, All house clean-ups, Debbie, I have three announcements . . . one of which is important.

The 1974 Epitome

DR. ALBERT ZETTLEMOYER



Bill Hookway, Ray Hammell, Pete Rocco, Leon Vlahakes, Roland Zuk, Clark Kerr, Frank Arsi, Woody State, Jim MacWilliams, Bill McCarthy, Bob Woodside, Bill Mongon, Roger McKinney, Skip Csrnko, Tim Kisner, Steve Seidel, Mike Meza, Mike Pekarski, Jim Blaine, Bill Ash, Kirk Houser, Tom Giarla, Dave Charters, Tom Hutchinson, Roger Lambert, Bill Dove, Mike Miller, Charlie Waltz, Mike Kendig, Steve Kuhls, John Powell, Kurt Unangst.



SIGMA PHI EPSILON

Chunky, Decent, Hutchy-Poo . . . I think Ryan
 is asleep . . . I think he's dead . . . M&M
 Miller, Parks . . . Golden Hearts . . . Benny &
 the Pledges . . . Hunga Dunga . . . Amazing Meza
 . . . Vlahaka-dopolous . . . Look at Bayer's chick
 . . . You are gone . . . Oh, really . . . Rock . . .
 Cowboy Hoagy . . . Ernie . . . Pekar . . . Pump-
 kin run! 84 count them . . . Batwings, boy is he
 ugly . . . Let's go to the Hop . . . Earth to A.D.B.
 . . . Skyhawk . . . Mac the Pimp . . . Mr. Wipple
 . . . Chas . . . Tonight's award goes to Sky . . .
 Greased Schlongs for lunch . . . I.E. plan = 349
 . . . Kung Fool . . . Springs . . . Zuk, What the
 hell is a Zuk . . . Mumgums . . . World Series,
 70¢ more . . . Douglas Lee Leo Woody O. State
 Smathers . . . Vihillis . . . Tommy G. . . .
 Woody . . . Push the dirt back . . . Couple in
 shower . . . Koonsie . . . Krunt . . . Clark Kent
 . . . The Dodger . . . All nighter in the city . . .
 There will be a change in the social calendar
 . . . Gregski . . . Skv squared . . . Hooky . . .
 B&L Concessions . . . The Sheet Mystery . . .
 Ash the mover . . . Ars . . . Chatas . . . B.J. III
 . . . Timski . . . Horny . . . Rocco clean your
 fishtank . . . Roger the Lamb to hang some ham
 . . . Skipper . . . Snatch Bar 205 . . . Pizza run . . .
 Did Leo and Arsi take eggs? No they took the
 pepperoni . . . Hairy Buffalo . . . We're Sig Eps
 from Michigan . . . Dotti's at Smugs . . . Mrs.
 Lynn Kendig, Mrs. Roland Zuk, Mrs. Rena Ham-
 mell, Mrs. Judy Kerr, Egg Salad, . . . You must
 be Brassiere . . . Helen threw a big one . . .
 Baby-maker Malfunction Mac . . . Ralph Stover
 . . . Hey Leo, 38-40? . . . The cake had a better
 body . . . How are you and yOu and you? . . .
 Phy. 21, 42, 63? The Mad Pisser struck last night
 . . . B-Ball crew . . . Where's Villas? Try the
 pinball machine . . .



1975 Epitome

ROBERT T. LINNEY

L
378
Q
E64

- | | |
|-------------------|-----------------|
| 1. B. Anderson | 17. J. Blaine |
| 2. T. Kisner | 18. R. McKinney |
| 3. B. Ash | 19. J. Miers |
| 4. F. Arsi | 20. P. Dolan |
| 5. G. Enders | 21. J. King |
| 6. J. MacWilliams | 22. L. Smathers |
| 7. T. Giarla | 23. B. Parker |
| 8. P. Rocco | 24. M. Miller |
| 9. K. Unangst | 25. R. Lambert |
| 10. B. Mongon | 26. S. Kuhls |
| 11. M. Barton | 27. S. Villas |
| 12. H. Kestenbaum | 28. R. Jackson |
| 13. D. Charters | 29. M. Finch |
| 14. B. Bayer | 30. C. Kerr |
| 15. K. Grieshaber | 31. K. Houser |
| 16. S. Giglio | |

SIGMA PHI EPSILON

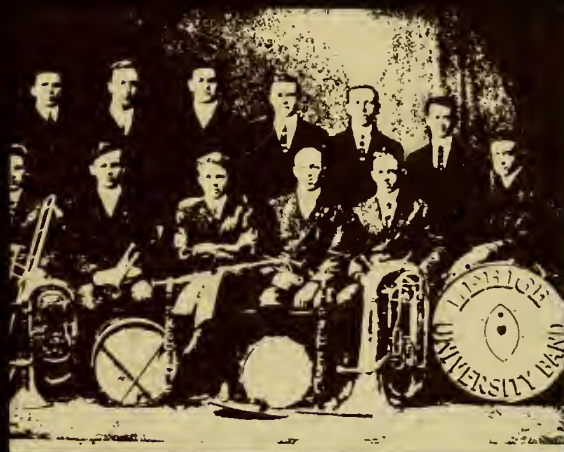


Gabe, Sky, Parks . . . Yes Horny, snakes do have knees, District Day, Yodel Dolan . . . Skipper, Krunt, Chatas . . . 5 to 1 on the Sig-Ep Traveling Football Team . . . House Bong . . . Hey head! . . . ADB, SAV, JJ . . . L is B . . . Oh, sures, John Yardley . . . The Big One . . . Yvon Lambert, Pointer, Gregski . . . I'M POPEYE . . . I've just got one gripe, Mencer . . . Free the Foosball Four . . . Rocksbury P.A., Ars, Dolanski . . . Go Speed Beitzel . . . Collect call to Ralph . . . Clark M. Kerrfoot, 12, Hank . . . Let's take Arsi's van, it's on tap! . . . Couple in shower . . . Oblio-waiting . . . Cro-Meza, da Gigs, Ash-hole . . . Monty Python at 10:30 . . . doublebank, condom ball, PB . . . Kis, Mongoon, Fincho . . . Sky's on 60-second delay . . . Cylinder Dog . . . the Pillars of Granite . . . Fat Man Leo, Waldo-Baldo, Benny . . . Ripple's birthday (he's 37) . . . You owe me a beer, etc. . . . Your Mother! . . . Gorgeous George, DiPrimadonna, BB . . . Bring that back here, Ryan . . . I'm engaged, I'm engaged . . . Thumbs up on Rocco . . . Bayer's Beer Bonanza . . . Bucket Brigade . . . O.J.B., Hawker, Barton, Koonsie . . . Welcome Joe Who? . . . Rubber Man, sales are up . . . Rodger the Dodger, Horny, Mike Fasesky . . . Hey J's . . . Patty B.T. . . . try upstairs . . . Jackpot! . . . Where's our silverware . . . We're going for the cup this year . . . A losing Rose Bowl for Woody . . . We are NOT going to Fiji . . . Eat your Golden Heart out . . . Second Anal Sig-Ep Talent Show . . . 15,900 . . . T.G.+I . . . Arsi and Rocco for Campus Crawl . . . Like, I NEED you . . . Peppermint Schnapps . . . Fine 'em 25 . . . Go take a skip . . . Let's party . . . Villas for Steward.



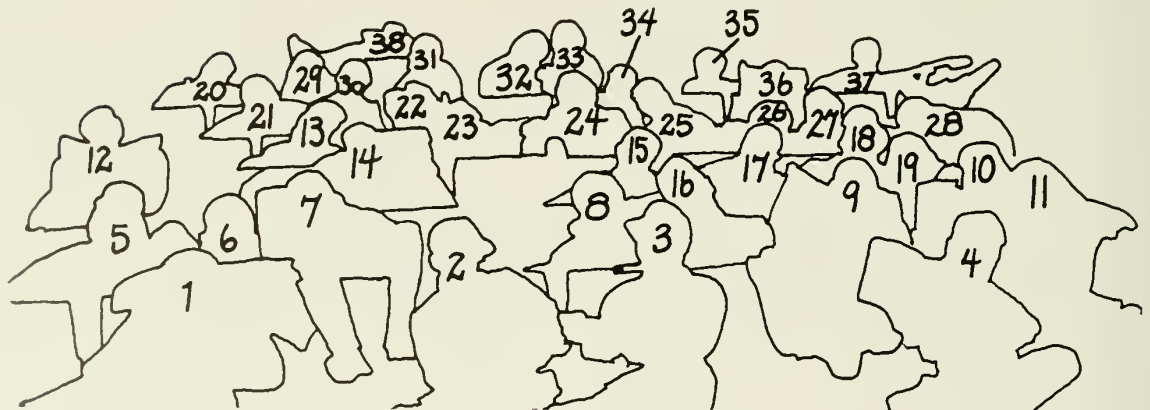


To the board of trustees, the faculty, the student-body, and all others interested, we offer this brief record of LEHIGH life.



SIGMA PHI EPSILON

Beer's Bayes Bonanza ... Gabe blade, The Greek, Ash browns ... 86 cans in Miers' room ... a keg a day ... E.O., J.J., F.T.M., i, IQ ... do a little dance, make a little love ... hey Dago, Reedhead Weedhead, Mac and Meza, Richie's birthday, XL and G. Snell ... D for the D Team Taiwan ... FDU crew, Lou who? ... H.D. ... Flipper, Goon ... Stroke my arm once more, and it will get hard ... Stick an m-h up the a curtains for Murph ... L. is R. Mrs. Beitzel, Bartooni, Deutscheronni ... the Bunt Bump ... Arsi, the Mansion, and the Allman Bros. in the van ... The Blimp, Bayer-head, smags crew ... "you know damn well what I said" ... 19 in the studio ... Roger Finch, D-Zone, \$80 hook ... Take it away Enders, 75 is still alive ... (well s it, we'll f it)² Spencerooni, Chatas, Professor ... have another drink, Dick ... we want a MOON! ... Benjamin, Darby, Bunter ... you better put your brown pants on ... H-toad, the Bouncer, DiGregorro ... M.M., A and R, Nancy Kuhls ... its only a bush fire ... Speed Beitzel, Dillwad, DiPrimawitz, Madierawitz ... NFW, ixnay on the alktay, the System, the Yodelers, Fabian, Ars ... 1 if by land, 2 if by sea, 3 if by air ... Crow is below Sammy, the Ghetto, ... L.T. crew ... Mrs. Charters ... Gregski, Chunny, Mrs. Endess? THAT will cost you, 10-5 suck'em ... Timsky, Sky-high, H-off, Miers, Trudy ... Sorry, Senior ... E.E. 111 Bombay Door Parties, Oh the Monkey! ... Barton's customized leather goods, party in H-Off's room ... we're talkin' ... 10-4 good buddy, the cooler ... hall party ... and another one, Dick?





- | | |
|-----------------|----------------------|
| 1. K. Houser | 20. R. Reed |
| 2. D. Madiera | 21. P. Dolan |
| 3. C. Ugol | 22. E. Quirk |
| 4. A. D'Onofrio | 23. H. Kesternbaum |
| 5. E. O'Mara | 24. J. Murphy |
| 6. B. Dietrich | 25. J. Blaine |
| 7. M. Barton | 26. D. McKendrick |
| 8. D. Charters | 27. J. Beitzel |
| 9. R. Lambert | 28. C. Brown |
| 10. S. Seidel | 29. B. W. Haltenhoff |
| 11. T. Kisner | 30. W. Grieshaber |
| 12. C. Shietrum | 31. W. Mencer |
| 13. J. Miers | 32. P. Rocco |
| 14. G. Enders | 33. F. Arsi |
| 15. L. Vlhakes | 34. R. Asbeck |
| 16. T. Cressman | 35. H. Davis |
| 17. S. Giglio | 36. B. Dillman |
| 18. J. King | 37. R. D. Prima |
| 19. K. O'Grady | |